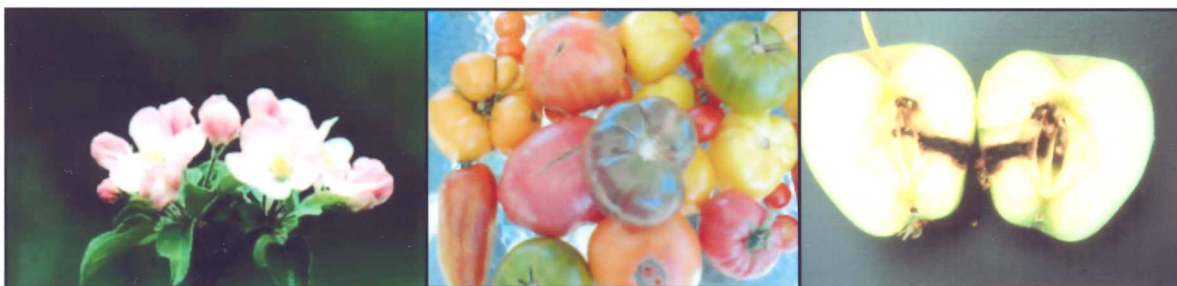




# New Mexico State University

## -GARDEN SERIES- MARCH 23RD THROUGH APRIL 27TH



*The Garden Series* will be sponsored by the Torrance, Santa Fe, and Bernalillo County Extension Offices. They will be held at the Edgewood Soil and Water Conservation District Office, on Old Route 66, 1 mile West of Moriarty. A total of 6 sessions will be offered on Tuesday's from March 23rd through April 27th, beginning at 6:00 p.m., and lasting until approximately 8:00 p.m. The schedule is as follows:

Session I: March 23rd  
Soils and Irrigation, Cheryl Rosel

Session II: March 30th  
Fruit Trees and Small Fruits, Patrick Torres

Session III: April 6th  
Care and Selection of Ornamental Trees, Joran Viers

Session IV: April 13th  
Low Water-Use Plant Selection,  
(Perennials, Shrubs, and Grasses), Curtis Smith

Session V: April 20th  
Plant Pests (Diseases and Insects), Joran Viers

Session VI: April 27th  
Vegetables, Gene Winn

Presenters include New Mexico State University professional staff. Please call any one of the Extension Offices if you would like to attend, as enrollment is limited. Bernalillo County 505-243-1386, Santa Fe County 505-471-4711, and Torrance County 505-246-4743.



If you are an individual with a disability who is in need of an auxiliary aid or service to participate in any of our activities, please contact Patrick Torres by March 18th, 2010, at 505-471-4711.

*New Mexico State University is an equal opportunity employer affirmative action employer and educator.*

*All programs are available to everyone regardless of race, color, or national origin. NMSU and the USDA cooperating.*